

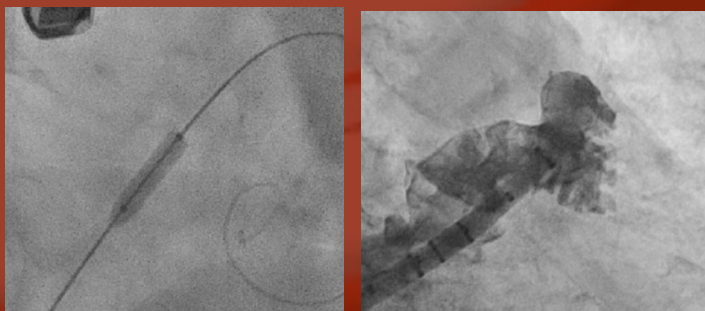
FEops HEARTguide™ Case Report: LAAo

Operator: Dr Liesbeth Rosseel
A.S.Z. - Algemeen Stedelijk Ziekenhuis, Aalst, Belgium

86-year-old woman, permanent Afib, Severe low GI bleed on NOAC.

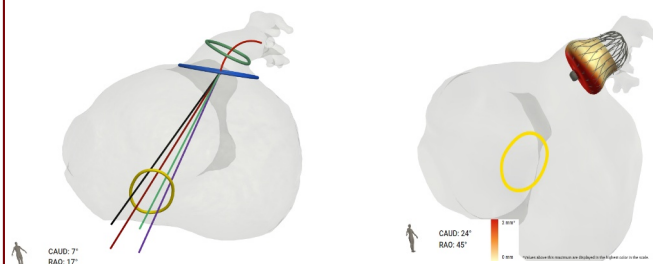
Challenge

Very difficult transseptal manipulation of catheters, despite balloon dilatation of the interatrial septum.

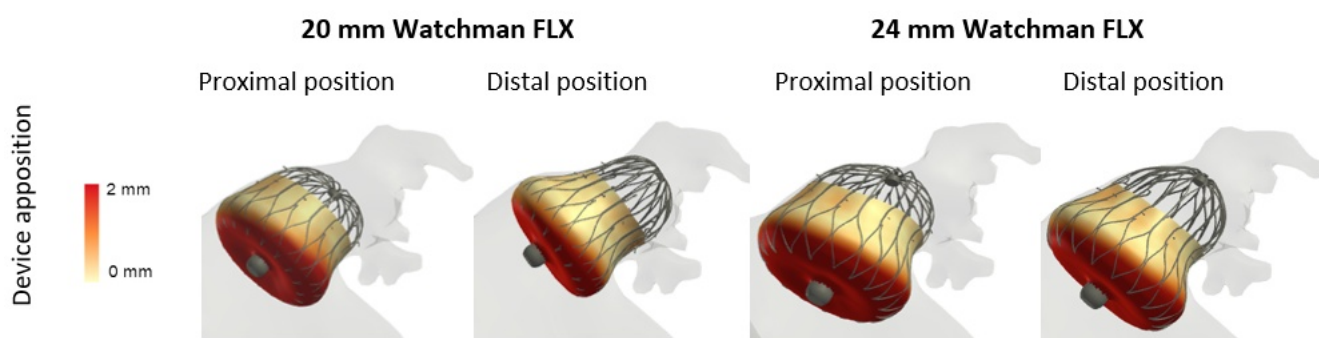


Solution

FEops HEARTguide's patient-specific computer simulations allowed to define a clear strategy on type of delivery catheter, device size and positioning, after evaluating pre-operatively different Watchman FLX (Boston Scientific) device sizes and positions.



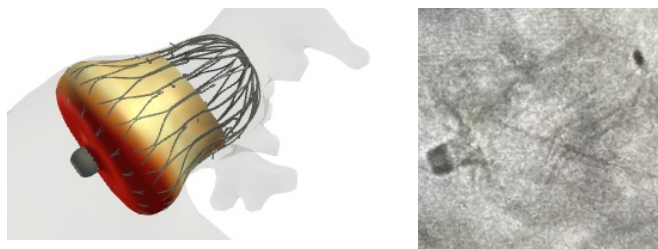
FEops HEARTguide™ simulations



Simulated Mid-Lobe Mean Diameter	19.3mm	17.1 mm	22 mm	20.7 mm
----------------------------------	--------	---------	-------	---------

Result

With the support of FEops HEARTguide simulations, the best preoperative solution was identified, and an optimal position of a 20mm Watchman FLX device was reached in a single deployment.



“When encountering such a challenging septum impeding every catheter manipulation, having a well pre-defined strategy on choice of catheter, device size and especially pre-deployment positioning of the device, really helped in achieving a successful single hit deployment”

- Dr Liesbeth Rosseel